



# [Havelock North Inc.]

PO Box 8475 Havelock North

## Newsletter November 2011



President--- Norris Kenwright 877-8412 [rita-norris@xtra.co.nz](mailto:rita-norris@xtra.co.nz)  
 Secretary--- Trish Loye 878-5920 [pals.bkh@xtra.co.nz](mailto:pals.bkh@xtra.co.nz)  
 Treasurer--- Judith Bell 877-4255 [jmbell@xtra.co.nz](mailto:jmbell@xtra.co.nz)

Committee: -- Margaret Buckley 844-6393, Joan Sye 876-9380, Garth Thornton 877-5343  
 David Ward 877-7518, Bobbi Allen 870-0281, Glenys Fitzpatrick 877-4232

\*\*\*\*\*

Greetings Everyone,

It is time to write the final newsletter of 2011 and also to bring you up to date with the planning for 2012. We have been lucky having an excellent Spring. The Prunus trees along Te Mata road opposite "Summerset" were full of Tuis and Waxeyes and the



Cherry blossoms, although delayed for two weeks, were magnificent. We visited Mabins' Taniwha daffodils fields just South of Waipukurau. They are always worth a visit to see the wide varieties of daffodils.



Now just back from another trip to see friends in Surfers Paradise (and some fishing) we are ready to organise the final meeting of the year at The Community Centre on the 24<sup>th</sup> November.



We were able to watch the All Blacks win although the last few minutes were nail biting. Our retired friends were bemoaning the fact that their State superannuation is linked to other sources of income and this is reduced in a graduated rate depending on what other income they received. They were jealous of the fact that the NZ super

is not indexed linked. On our return I noted that there was a move to slowly move our retirement age to 67. This is being suggested by several countries as the average age of the population increases and taxes are not keeping pace with the outgoings needed to maintain the present age level.

Another revelation published was that the world's population has now reached 7 Billion. (You are one in 7,000,000,000). This month the number of babies born will equal the population of Portugal and the number of people dying will equal the population of Norway. The net increase being the population of Libya -6.4 million (less one for Muammer Gaddafi of course).



In the last Ice Age homo sapiens was close to extinction with just a few thousands around; rather like the Orang-utan today. When Nelson fought the battle of Trafalgar in 1805 there were one billion of us. Then 3 billion in 1960; 4 billion in 1974; 5 billion in 1987; 6 billion in 1999; an amazing increasing trend due mainly to our ability to combat disease and better public health. With the increasing older population it may be prudent to invest your money in Retirement Villages for I see



that Summerset Villages have had a good response to their share float. It is predicted that the next major problem will be the supply of fresh water for the world's population and this will come to a head in about 2030.

Now recently I have seen the Engineers Department installing water meters in gardens where the stop taps are. One was put in front of our house. I asked the workmen why this was being done and was told that it was just research to monitor how much houses were using. Yea Right!!!. Are we going to be charged separate water rates soon?



So summer is coming and let us all set out to enjoy ourselves. Yes we never had had it so good and it won't last. Meet your friends in the U3A; don't save for ever; spend of those hard earned savings now. Don't commit too much time saving for that rainy day or distant future that you may not be able to enjoy. Days of enjoyment now will be of more value than weeks in a few years time and you will have all those



memories.

Have a lovely summer; come to our meeting on the 24<sup>th</sup> November and fill in the forms for your choices of U3A groups in 2012.

Regards

Norris Kenwright (President)



# U3A November Meeting 2011

Thursday 24<sup>th</sup> November 10-30 a.m.

**Havelock North Community Centre**

We will have an extended brunch menu with deserts

Several free raffles for members

**\$10**

**Pay at the door BUT:-**

**It is essential you phone the Secretary 878-5920 or President 877-8412 to confirm your attendance for catering**

**Doors open 10-00 am Meeting 10-30 am Refreshments 10-45 am Speaker 11-15 am**

Since this will be my last meeting as President prior to the handover elections at the AGM in February I will take the opportunity to briefly speak on **Using the Energy of the Sun and Energy of the Wind** and introduce some amazing videos from the internet.

\*\*\*\*\*

## Interest Groups for 2012

The time has arrived to consider your choices of groups for 2012. I have been contacting convenors about any changes to the groups were offered in 2011. I have received many responses for which I thank you all and have attached the courses we are hoping to run later in this newsletter.

Our convenors do an excellent job but please remember that a convenor does not necessarily organise group meetings but acts as a spokesperson or someone whom the committee can approach if necessary. A group can meet and everyone can take part in the organisation which happens in some instances when groups circulate in members homes. I would like to thank **Linda and Ray Osborne** for 7 wonderful years of **"Light on Music"**. They are now retiring as convenors as it **Margaret Jardine** who has given so much time to the **"Medieval History"** group. Margaret is putting forward an idea for a group on **"The History of Technology"** if there is sufficient interest.

On the list you will see that we do have new topics on and **"Introduction to Croquet"** and a second group of **"Writing for your Grandchildren"**. **Pat Frykberg** will continue with the existing group (there are vacancies) and **Susan Fitzgerald** will start a new group. The monthly **Gardening** group at the **Green Door Garden** centre has been very successful and we need a convenor for this. **Green door** run the program but we need someone to act as a contact with them.



There have also been requests for a group on **Introductory Maori and Protocols** and **Geology- Structures of the Earth; Rocks and Minerals**. Let us see if we can get these



off the ground.

The full list is at the end of this newsletter for you to choose from and a form for you to complete. **Please bring this with you to the meeting on the 24<sup>th</sup> November** and of course we would be delighted to hear of new topics which you can suggest and help organise for our Community. Please contact me if you have them. **If you cannot attend the meeting then forward you forms with your subscriptions to the Secretary as soon as possible so that we can give the lists to our Convenors by the middle of January.**

\*\*\*\*\*

## Here are some reports from our convenors

### Lunch Group 4

Another year gone by. This year we have been to many different restaurants - mostly great. Our group averages 12 per sitting and there is always lots of laughter and chatter. Sadly we had two of our group pass away Sue Davis and Gretchen Bevan. Another member is cycling in Europe - Lyn Gentry and should be home again by Xmas.

We will end the year at the Old Church, then will have a break till next year.

Betty Boyle

**Mah-Jong Group**

The Mah-Jong group meets weekly at the Havelock North Bridge Club. We have 36 members with 5 new players this year, who are enjoying the challenge of learning a new game. We play for fun; there is no pressure to compete. This is always apparent with the laughter and chatter at each table.

Donations of any unwanted complete Mah-Jong sets would be appreciated.

Faye Culham Convener

**Remarkable People**

We discuss remarkable people from any era, their achievements and what shaped them. The definition of 'remarkable' is yours to make. Topics in 2011 have included Nancy Wake, Amy Bock, Lawrence Lowry, Bismarck and many others both famous and little known.

Meetings are on the 3<sup>rd</sup> Thursday of the month at 2.00pm---- Margaret Clarke

**'Light-on-Music' group**

We met on the fourth Tuesday of each month from February onwards and watched a musical DVD with a group averaging 10 each time. The selections were mainly musicals from the 40/50's a time when the studios were turning out some great musicals. However we did slip in an odd Andre Reiu



At the end of the film we enjoyed afternoon tea turned on by a nominated member

Lynda and I have had the pleasure of arranging these shows for the past seven years and its been a lot of fun.

Lynda and Ray Osborne

**Rambling**

Our Ramble group continue in good spirits - we seem to be very lucky on the day - we haven't been rained off once - in fact we usually get some sunshine even in winter. This year, two rambles have stood out, the first being Maraetotara Stream and the second when we tried the new Rotary pathway from Haumoana (end of Grange Road north), and walked across the new TSB bank bridge - the day was particularly good, the light lovely making the scenery superb - all enjoyed - it got a 10 out of 10 that day. Looking forward to another great year. Kind regards. Pat Lloyd

**Lunch Group 3**

Another year of culinary delights and friendly chats for our lunch group. We tickled the taste buds with Thai and Indian cuisine and found it delicious. We dined in Hastings & Napier; Taradale is the venue for November when we dine out at EIT supporting the young chefs of the future !

Joan Sye

**Scrabble**

Scrabble group has met twice a month and numerous new words have come to light. The dictionary is in great demand and fun is had by all. There are 9 members of the group and we have all improved over the year. Joan Sye

**Philosophical Issues**

Philosopher Bertram Russell once quipped, "The point of philosophy is to start with something so simple as not to seem worth stating, and to end with something so paradoxical that no one will believe it". If he were alive, Lord Russell would applaud our efforts. Each fortnight a group of up to 20 attempts to unpack those deceptively simple kinds of questions that kids ask and parents like to duck: questions like, "where does the light go when you turn it off?" "How can we ever know whether God exists?" etc

By the end of each lively session we've swum into the deep end of a pool with many seeming contradictions. From November 2<sup>nd</sup>, we'll be starting from the beginning again. For those who've been with us it's a chance to re-examine their thinking and for any newcomers, we welcome their fresh approach. Graeme Davidson

**Theological Issues**

Muslims regard Jesus as a teacher and prophet – an ordinary mortal chosen by God to be one of his messengers. Unlike Christians though, they don't believe Jesus was divine or died for our sins. So, what evidence is there for Jesus being divine? Why did the early Christians fight over questions of Jesus' humanity and divinity so that even the Emperor and Roman troops became involved? How reliable is the Bible? How much is myth, analogy, metaphor and dogma and how much is historical fact? How did Christianity come to be the biggest religion in the world and why is it still growing rapidly in some countries and shrinking to near oblivion in others? These and many other questions have been occupying about a dozen of us for the last 6 months and will open up a new theological issues study at the beginning of next year. In the meantime, anyone is still welcome to join us for the remaining few sessions as we look at challenges facing religion today. Graeme Davidson



**Geography.** The group has enjoyed a fourth interesting year. 16 members have learnt about cities and countries as diverse as Sapporo, the Philippines, Slovenia, the Chatham Islands and New Orleans.

John Fitzgerald (convenor)



**Writing for your grandchildren.** 8 -9 members gathered every month to share their newly written stories of their early years. Members were guided by each other and we encouraged positive criticism of our work. Two members expect to complete their 'books' by Christmas. Susan Fitzgerald (convenor)

**Media Views.**

Existing members have indicated that they wish to continue next year. The maximum we can manage is 12. Two of this year's members dropped out during the year.

**Pétanque**

We are just about to resume playing after the winter so cannot forecast for 2012 as yet.

Joyce Browning

**Medieval History:**

Over the last two years we have covered, "Early, High and Late Medieval, History, which will end in November this year. I am unable to continue as convenor next year and have suggested a History of Technology as a Topic for next year. Regards, Margaret Jardine.



**Photo Interest**

Our group has been busy with more varied activities recently

We had a very interesting session with professional photographer Rod Elmore demonstrating his new camera a Fuji X100 "What I am most appreciate of this group, apart from always learning about cameras, subjects, shooting, etc is total awareness of surroundings in one's life with the add-on of always trying to improve the photo's of those subjects. I find the intimacy of the group most appealing and most instructive."

we have been discussing a little on the mechanics of digital cameras and a lot on the effects of light, grouping of subjects, perspective and viewing angles. This has been very useful in improving our photographic intelligence."

It has been interesting to see the high quality results that our members can produce"

I have been forced into expanding my photo methods using only one hand and a wheelchair or scooter eye level with some of the topics explored-thank goodness for the auto stabilizer! Perhaps I could pursue this with a group next year- Limitations --use only one hand, a chair eyelevel ,mirror image only, --- tricky i think! i thoroughly enjoyed scrabbling around near floor level with a little hand mirror and capturing reflections of my room and chair and self from totally new angles - great fun!

Here's to next year -----Sheila Bowden



**Computer Group**

This has been an exciting year with tremendous help from Tony Briggs, Margaret Buckley, Sylvia Franklin, Bill Allen and all the other helpers who have made the year a success. We have been able to combine Windows 7 and XP with a new projector and large screen to fully illustrate the two systems. Topic we have covered are Microsoft Word, PowerPoint and Excel, Kindle electronic books, Photographic editors and making and editing videos. Also we have investigated different browsers such a Chrome and demonstrated the downloading of videos from You Tube. A great year. And thanks for the help when I was under the weather. Cheers. Norris



Joan Sye with the French Group Float At the Hastings Blossom Festival

\*\*\*\*\*

**Parking at the Community Centre**

There has been considerable concern about parking cars when meetings are held at the Community Centre in Havelock North. The numbers of places available are totally insufficient and if there are two groups meeting at the Centre it is impossible to find a parking place. To compound the problem the Hastings District Council has decreased the time you can park in Te Mata Road and other streets to just one hour. This means that many people will be liable for fines if functions take more than one hour as they usually do.

Pure Catering have had extreme difficulty with this situation and have had functions cancelled because of the restrictions. The only two hour period is now in the Clock Tower area opposite the shops and there is a 3 hour period down Treachers lane behind the "Rose and Shamrock". I cannot see retailers in the village being happy with this if the Community Centre clients take up these areas. There are some angle parks on the other side of

The Domain but these are usually used by workers in the village shops and businesses.

I have expressed my concern to the Mayor and District Council on your behalf; especially because of the distances our older members have to walk and that the Community Centre had insufficient parking. In the reply I has told that the reduced times were introduced after consultation with the Community. However I have not found anyone who remembers this-especially Pure Catering. The letter also said that they would investigate ways of expanding the C.C. car park by 24 extra places. This would involve removing the Primary Schools adventure Playground which has apparently encroached onto the Council's land. It not would be in the immediate future.

In the meantime I can only alert you to the restricted parking and ask you to consider using the alternative parking I have mentioned. Also if you have the opportunity please bring the matter up with local representatives for the more publicity there is about the problem the more quickly it may be resolved. I wonder if in creating the 1 hour period they considered people using the swimming pools in Summer without being fined.

**N. Kenwright]**

\*\*\*\*\*

### Science for Oldies.

Are you wearing out? How about going down to the local medical centre for a replacement part?

Scientists have now discovered more than twenty ways of growing spare body parts which will significantly extend life expectancy and could end long waits for transplants. This is all being done by the ubiquitous stem cells. Already at least three different types of organs; including the bladder; urethra and windpipe have already been grown in laboratories before being transplanted into patients without rejection problems.

Many patients have had new veins grown in the lab and transplanted into their legs.

Research has begun into replicating the liver, heart, kidney, pancreas and thymus. We are living in some amazing times in this use of stem cells.

Also Edinburgh and Bristol Universities have for the first time made millions of red blood cells from stem cells. The average blood transfusion uses 2.5 million red cells. It is hoped that eventually these cells will provide all the types of blood for the blood banks of Britain.

What we will have to wrestle with next are the ethical issues; the availability and cost to patients and of course and increasing older number of people to be supported in retirement. Wow that's a biggie to consider.

### Political Correctness gone Mad

The BBC is facing a backlash over advice it gave to presenters that dates should be religiously neutral. Instead of BC (Before Christ) and AD (Anno Domini) they should use the terms Before Common Era (BCE) and Common Era (CE). This is because non Christians could take offence. The Broadcasting ethics committee says the BBC should be committed to impartiality.

London's Mayor has described this as puerile, spineless and absurd.

### Finally for your amusement

**Check your shampoo bottle label.**



**I don't know WHY I didn't figure this out sooner! It's the shampoo I use in the shower! When I wash my hair, the shampoo runs down my whole body and (duh!) printed very clearly on the shampoo label is this warning - FOR EXTRA VOLUME AND BODY! No wonder I have been gaining weight!!! Well! I have gotten rid of that shampoo and I am going to start using dishwasher liquid instead.**

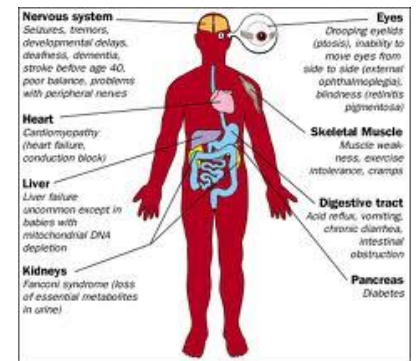
**Their label reads, DISSOLVES FAT THAT IS OTHERWISE DIFFICULT TO REMOVE.**

**Problem Solved!!! If I don't answer the phone I'll be in the shower!!! ++++++**

The Evening news is where they begin with 'Good Evening,' and then proceed to tell you why it isn't. A bus station is where a bus stops. A train station is where a train stops. On my desk, I have a work station. You're never too old to learn something stupid.

**Cheers**

**Norris K. Editor**



## U3A Groups and Convenors for 2012

<b>Art 1</b>	Heather van Oostveen	876-0266	Thursdays at 10 am
<b>Art Interest Group</b>	Linda Ryan	877-6651	2 <sup>nd</sup> Thursdays @9-30am
<b>Studies of the Inner self</b>	Peggy van Asch	877-5294	1st Thursdays @ 2pm
<b>Basic Video Editing</b>	Roy Campbell	836-7197	To be advised
<b>Books (Tuesday)</b>	Di Taylor	875-0307	1 <sup>st</sup> Tuesday @ 9-30am
<b>Books (Wednesday)</b>	Margaret Bain	877-2454	2 <sup>nd</sup> Wednesday @ 9-30am
<b>Card Making 1</b>	Dale Jackson	877-6221	3 <sup>rd</sup> Wednesday@ 9-30am
<b>Card making 2</b>	Dale Jackson	877-6221	3rd Tuesday at 9-30am
<b>Cinema Visits</b>	Trish Loye	878-5920	Tuesday 10am as advertised
<b>Classical Music Videos</b>	Wendy Wilks	877 6611	1 <sup>st</sup> Tuesday @ 1-30 pm
<b>Computer Studies</b>	Norris Kenwright	877-8412	2 <sup>nd</sup> & 4 <sup>th</sup> Mondays at 2pm
<b>Contemporary N.Z. Art</b>	Barbara Holland	877-5926	3 <sup>rd</sup> Wednesday @ 1-30pm
<b>Intro to Croquet</b>	Dale Jackson	877-6221	
<b>Discussion</b>	Joyce Paton	877-6822	3 <sup>rd</sup> Tuesday @ 9-30 am
<b>Egyptology</b>	Rev. Cherie Baker	877-6725	Saturday 2pm every 2 months
<b>Historic Houses &amp; Gardens</b>	Marnie Mackesy	877-2078	3 <sup>rd</sup> Monday @ 9-30am
<b>Gardening</b>	convenor needed	877-6221	Monthly at the "Green Door"
<b>Genealogy</b>	Dale Jackson	877-6221	weekly for 6 weeks Tuesday 10am
<b>Geography</b>	John Fitzgerald	877-6603	1 <sup>st</sup> Thursday @ 10am
<b>Italian Studies</b>	Patsy Burns	870-0614	Every 2 <sup>nd</sup> Wednesday@9-30am
<b>Jazz</b>	Barbara Holland	877-5926	3 <sup>rd</sup> Monday @ 1-30pm
<b>Looking at Art Wed1</b>	Dianne Taylor	875-0307	Every three weeks
<b>Looking at Art Wed2</b>	Marilyn Belcher	877-2283	Every three weeks
<b>Looking at Art Thurs1</b>	Elizabeth Murray	873- 8467	Every three weeks
<b>Looking at Art Thurs2</b>	Caroline Moorhead	877- 8893	Every three weeks
<b>Looking at Art Fri 1</b>	Jill Wilson	877- 6525	Every three weeks
<b>Looking at Art Fri 2</b>	Louise Ross	877-6559	Every three weeks
<b>Lunch group 1</b>	Joyce Paton	877-6822	2 <sup>nd</sup> Wednesday @ 12-30pm
<b>Lunch group 2</b>			
<b>Lunch group 3</b>	Joan Sye	876-9380	1 <sup>st</sup> Wednesday @ 1-00pm
<b>Lunch group 4</b>	Betty Boyle	876-5438	1 <sup>st</sup> Friday @ 12-30pm
<b>Lunch Group 5</b>	Glenys Fitzpatrick	877-4232	2 <sup>nd</sup> Thursday@ 12-30pm
<b>Mah Jong</b>	Faye Culham	877-1244	Every Tuesday @ 1pm
<b>Media Views</b>	Joyce Browning	873-7992	1 <sup>st</sup> & 3 <sup>rd</sup> Mondays @ 2pm
<b>Memories of the Past</b>	Chris Hough	873-4486	1 <sup>st</sup> Monday at 2pm
<b>Music Appreciation</b>	Jim Woodward	877-4882	Every other Friday @ 2pm
<b>Pétanque</b>	Joyce Browning	873-7992	Every Tuesday @ 9 am
<b>Philosophical Studies</b>	Graeme Davidson	8776749	Wednesday 10-11 am
<b>Photography Interest</b>	Contact Secretary	877-6221	4 <sup>th</sup> Thursday@ 10am
<b>Rambling</b>	Pat Lloyd	877-2977	2 <sup>nd</sup> Saturday @ 9-30 am
<b>Remarkable People</b>	Margaret Clarke	877-3355	3 <sup>rd</sup> Thursday @ 2pm
<b>Rummikub</b>	Glenys Fitzpatrick	877-4232	Every Friday @ 1pm
<b>Scrabble</b>	Joan Sye	876-9380	Fridays 1 <sup>st</sup> & 3 <sup>rd</sup> 2pm
<b>Spanish</b>	Jim Woodward	877-4882	Every Friday @ 9-30am
<b>Theological Issues</b>	Graeme Davidson	877-6749	2 <sup>nd</sup> Thursdays 10-30am
<b>Travel</b>	Rosemary Duff	877-0257	3 <sup>rd</sup> Thursday @ 10 am
<b>Writing for your Grandchildren (Part 1)</b>	Susan Fitzgerald	877-6603	4 <sup>th</sup> Monday @ 10.30 am
<b>Writing for your Grandchildren (Part 2)</b>	Pat Frykberg	877- 8463	
<b>Geology of the Earth; Rocks and Minerals</b>		877-8412	N. Kenwright
<b>Maori Studies</b>	Depending on Interest		
<b>Introduction to Technology</b>	..		

We hope that you can encourage members to develop some new groups for our expanding membership

**Convenors: Please check for errors and then Contact Norris Kenwright 877-8412 or Trish 878-5920 as soon as possible**



ENROLMENT FORM FOR 2012

Please hand in or return this completed form to the Secretary, Havelock North U3A, Trish Loye, P.O. Box 8475 Havelock North 4157.

Name :( Dr./Mr./Mrs./Ms./) (please print).....

Address.....Post Code.....

Phone number: ..... Email; .....

Do you want the newsletter by email? (This is preferred to save costs).....

Annual Subscription..... \$ 10 - 00

These groups have annual fees for Hall hire. } Computing..... \$ 10 - 00
Please include these fees only if you join } Mah Jong ..... \$ 25 - 00
these groups.

Total

Each family member please complete individual forms

Please make Cheques payable to - "U3A Havelock North Inc."

Would you like a receipt? Please put a tick in this box and enclose A Self addressed stamped envelope. (60c) [ ]

\*\*\*\*\*

U3A Groups I would like to attend in 2012

Table with 2 columns: Group, Did you attend this course in 2011? with 4 rows of dotted lines and checkboxes.

Is there a new group activity which you could help to promote? \_\_\_\_\_

Signature .....

Please Note There is a policy on course acceptance and priority to being in a group. You must be a financial member of U3A. New members in all groups are welcome. When joining a group, members from a previous year have priority; then other members can join. Financial members of the Havelock North U3A take precedence over members from other U3A's.